

Villa 5- The Windsor

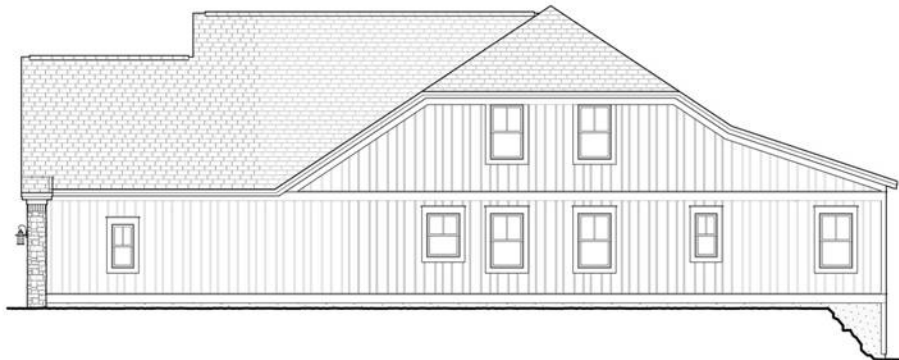
1,911 SF Two Levels
1,106 SF Lower Level



FRONT ELEVATION



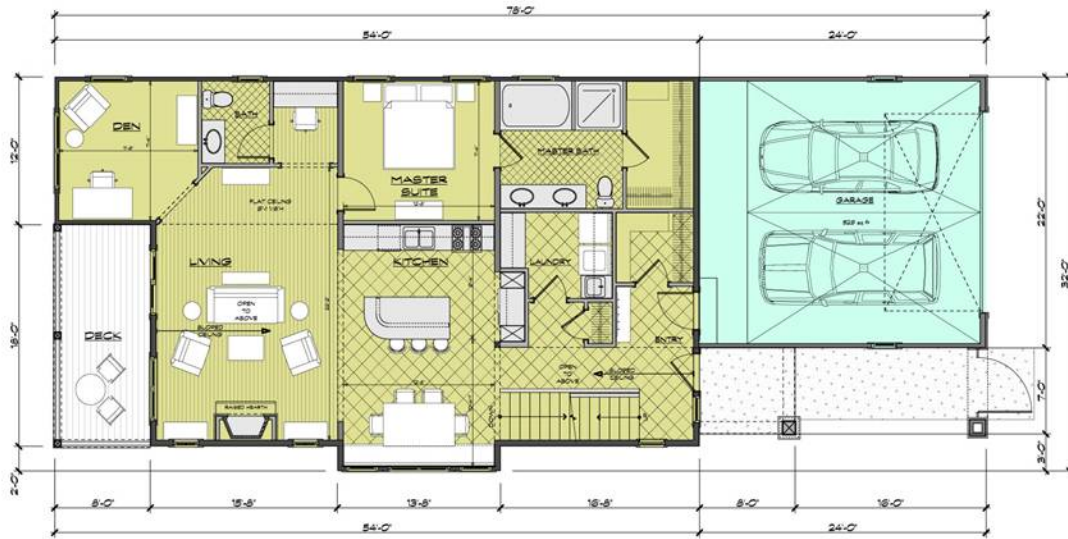
REAR ELEVATION



RIGHT ELEVATION



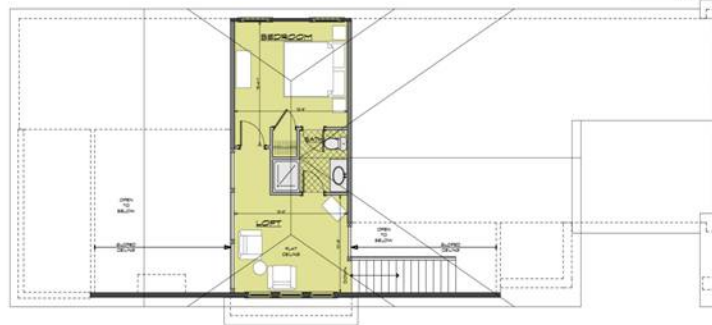
LEFT ELEVATION



MAIN LEVEL FLOOR PLAN

1,503 sq ft

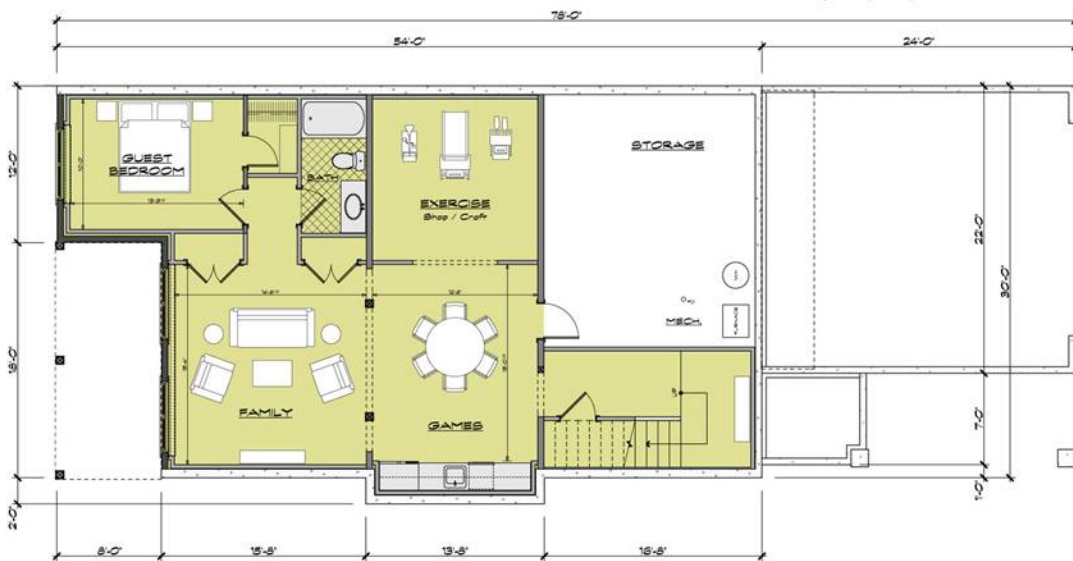
SCALE: 1/8" = 1'-0"



UPPER LEVEL FLOOR PLAN

408 sq ft

SCALE: 1/8" = 1'-0"



LOWER LEVEL FLOOR PLAN

1,106 sq ft

SCALE: 1/8" = 1'-0"